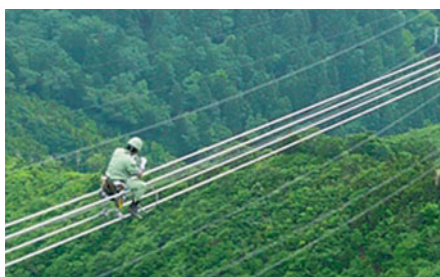


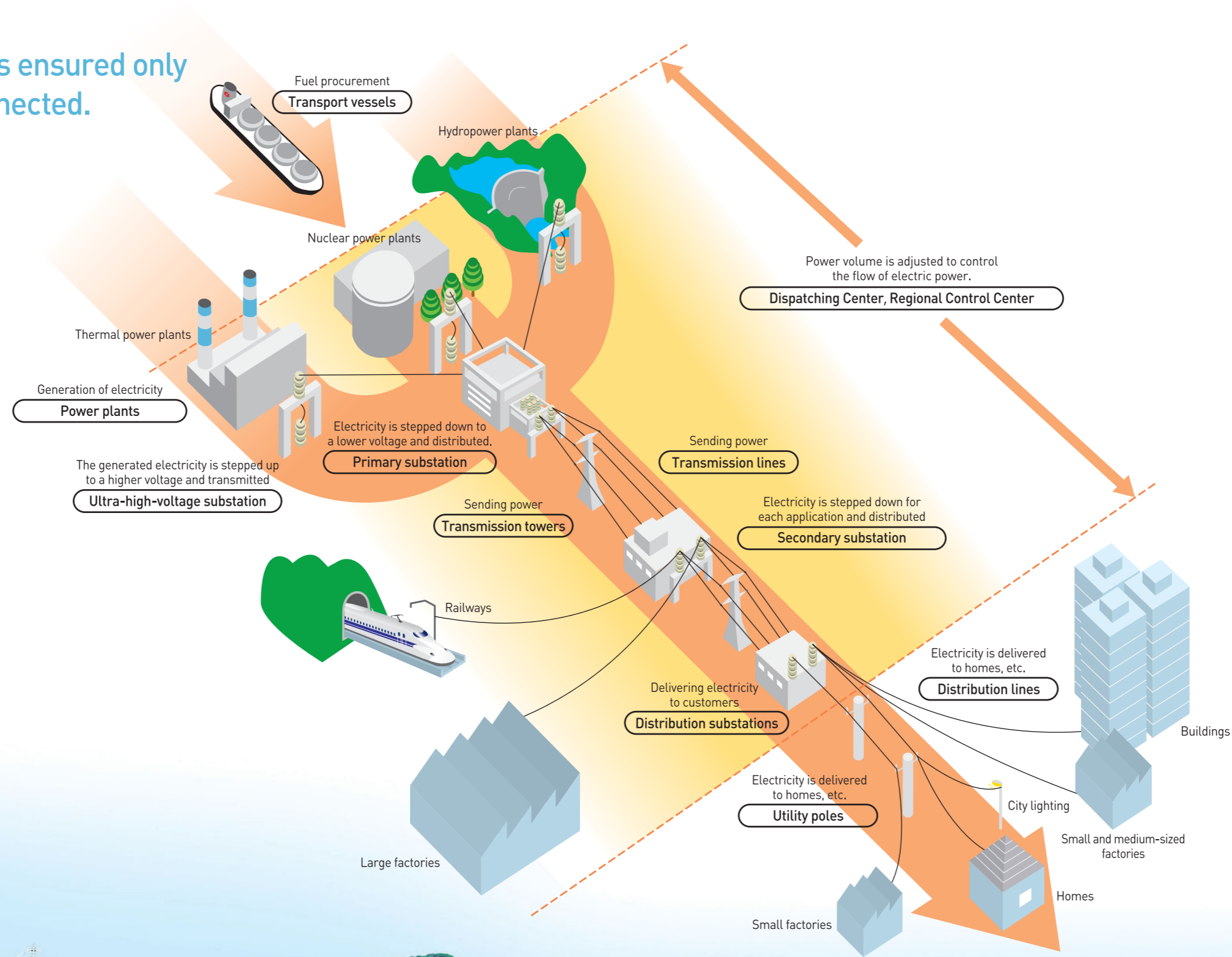
A stable power supply is ensured only when everything is connected.

We conscientiously execute our responsibilities, from procurement of fuel to delivery of power to homes.

A stable supply of electric power to our customers—this is the promise that Kansai Electric Power Group employees work every day to fulfill. Procuring fuel supplies with a long-term viewpoint in order to support the efficiency of our operations is a part of that pledge. So is our determination to deliver that energy without waste or inefficiency. With safety as our top priority, the Group is working tirelessly to fulfill its responsibilities in each of these roles, providing customers with a stable supply of electricity.

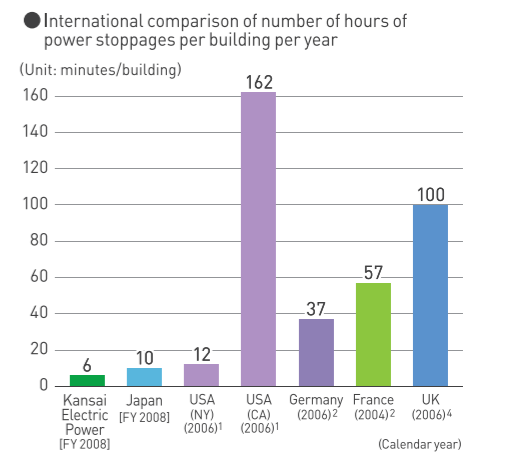


● Maintenance of transmission lines



We will continue to uphold the world's highest levels of quality.

Kansai Electric Power's mission is to provide a safe, reliable, high-quality supply of electric power. To accomplish this mission, we maintain all of the facilities and equipment that connect our power plants to our customers' businesses and households in the best possible condition at all times. In addition to inspecting, replacing and maintaining equipment at regular intervals, Kansai Electric Power applies its expertise in IT to develop and apply leading-edge remote monitoring and control systems, ensuring customers of the world's highest levels of quality in electricity supply.



¹ In United States data (both New York and California), 2006 results include times of stormy weather.
² 2006 results for Germany include times of stormy weather.
³ 2004 results for France include times of stormy weather.
⁴ 2006 results for the United Kingdom include times of stormy weather. However, they do not include planned stoppages or stoppages due to accidents on transmission lines.
 Source: Survey, the Federation of Electric Power Companies of Japan