

Regional Activities

Our joy is to bring joy to the lives of all local citizens.



Observation of distribution line work

A good rapport with the local community forms Kansai EP's underlying foundation. Through active involvement in community activities, from energy classes and workshops to sponsorship of sports and cultural events, we are making solid contributions to our home region's social development.



Youth soccer game



Tour of Nanko Power Plant by area children



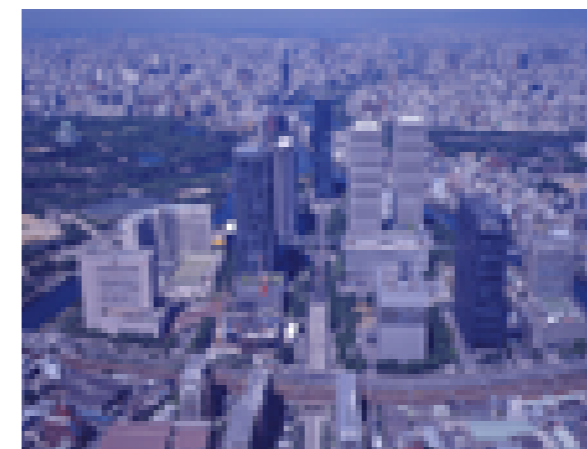
Tree planting



Deepening Ties Through Diverse Local Activities
Kansai EP strengthens its ties with local citizens in myriad ways. To stimulate curiosity toward science and electricity, we go directly into classrooms and conduct workshops involving electricity. To safeguard the lives of senior citizens living alone and protect important cultural properties, we undertake regular inspections of related electrical facilities. We also maintain open avenues of communication by supporting concerts, art exhibitions and other cultural events, and sports activities including football and junior soccer.

Venues for Enjoyable Learning about Energy
With the desire to bring energy concerns into sharper focus at the individual level, we have established "PR Halls" at 20 locations around our operating area. Here, visitors can observe how electricity is generated and learn about energy issues first-hand, in an atmosphere designed for fun and enjoyment.

Joint Action on the Environment
The 21st century is destined to be a century of coping with environmental issues, and at Kansai EP we are determined to support the local community in addressing environmental concerns. Our program of "eco-friendly" activities, implemented at all sales offices, works hand-in-hand with local citizens to improve the environment through initiatives such as tree planting and local beautification drives.



Osaka Castle and Osaka Business Park (OBP)